



Delta Monitoring Solution

Delta collector / DC1

Features

- ▶ Partial/ Zero export (with power meter module)
- ▶ MyDeltaSolar Cloud service
- ▶ 7 days backup (To prevent data loss caused by unstable internet)
- ▶ Wi-Fi/ RS-485/ Ethernet interface

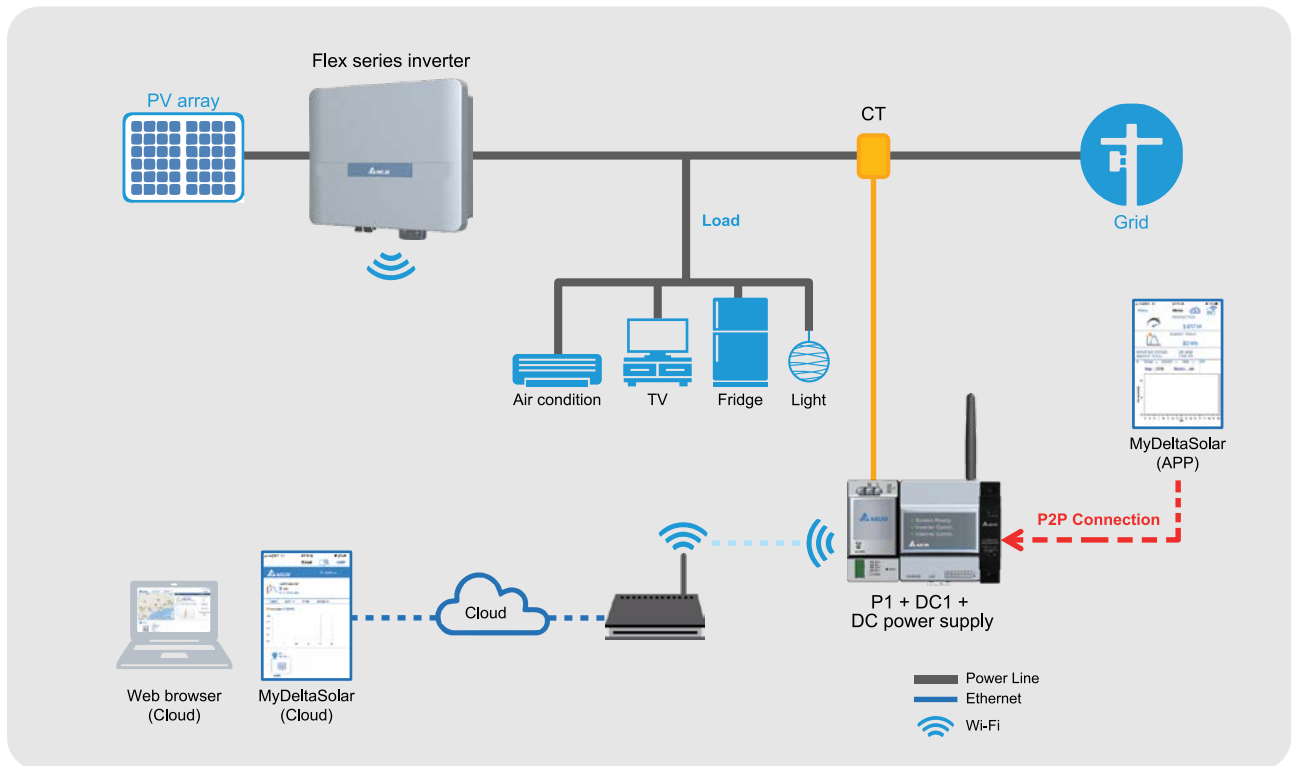
1300 335 823

www.deltapvi.com.au

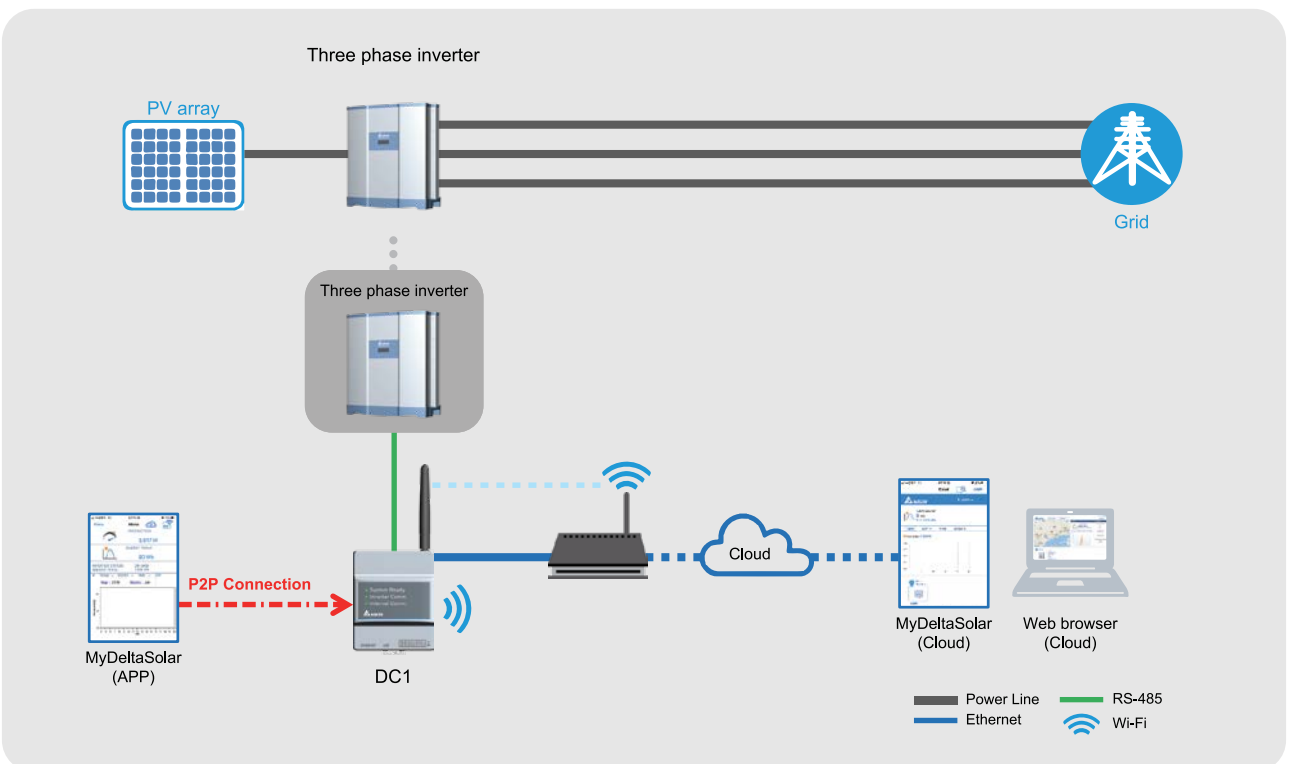
 **DELTA**
Smarter. Greener. Together.

System Architecture

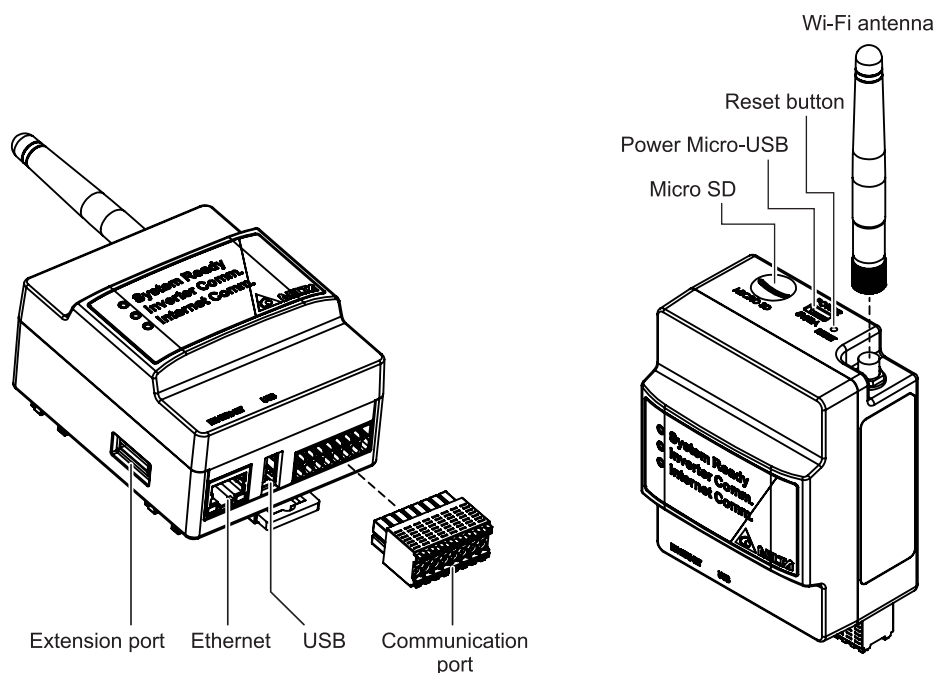
Residential monitoring solution



Commercial monitoring solution



Overview



Specifications

ELECTRONIC SPEC	DC1
Operating voltage range	9Vdc ~ 25Vdc (power port, can be supplied from inverter), 5Vdc (Micro USB)
Power Consumption	5 Watt
INFORMATION	
LED Display	<ul style="list-style-type: none"> · System Ready · Inverter Comm. · Internet Comm.
COMMUNICATION	
Wired	RS-485/ Ethernet
Wireless	Internal Wi-Fi Module 802.11n/a/g/b
REGULATION	
Safety Standard	EN 61010-1, CE compliance
Emission (EMI)	EN 300 328, LP0002, Part 15C, Telec T66
Immunity(EMS)	EN 301 489-1/-17, EN 55024, EN 55032, FCC Part 15B
CONNECTION	
I/O Port	2 pin terminal block for Power Port 4 pin terminal block for RS-485 2 pin terminal block for Can Bus 2 pin terminal block for Dry Contact 6 pin terminal block for digital inputs RJ-45 connector for Ethernet USB Port for data storage
GENERAL INFORMATION	
LED Display	System Ready, Inverter Comm., Internet Comm.
Operation temperature	-25°C ~ 55°C
Relative humidity	30% ~ 85%
Dimension (WxHxD)	72 x 90 x 55 mm
Weight	157g (with Wi-Fi antenna)

*Specifications are subject to change without prior notice



Delta Electronics (Australia) Pty Ltd
Unit 20-21/45 Normanby Road
Notting Hill, VIC 3168 Australia
www.deltapvi.com.au
www.deltaelectronics.com.au

Delta Electronics (Netherlands) B.V
Tscheulinstr. 21
79331 Teningen
Germany
www.delta-emea.com